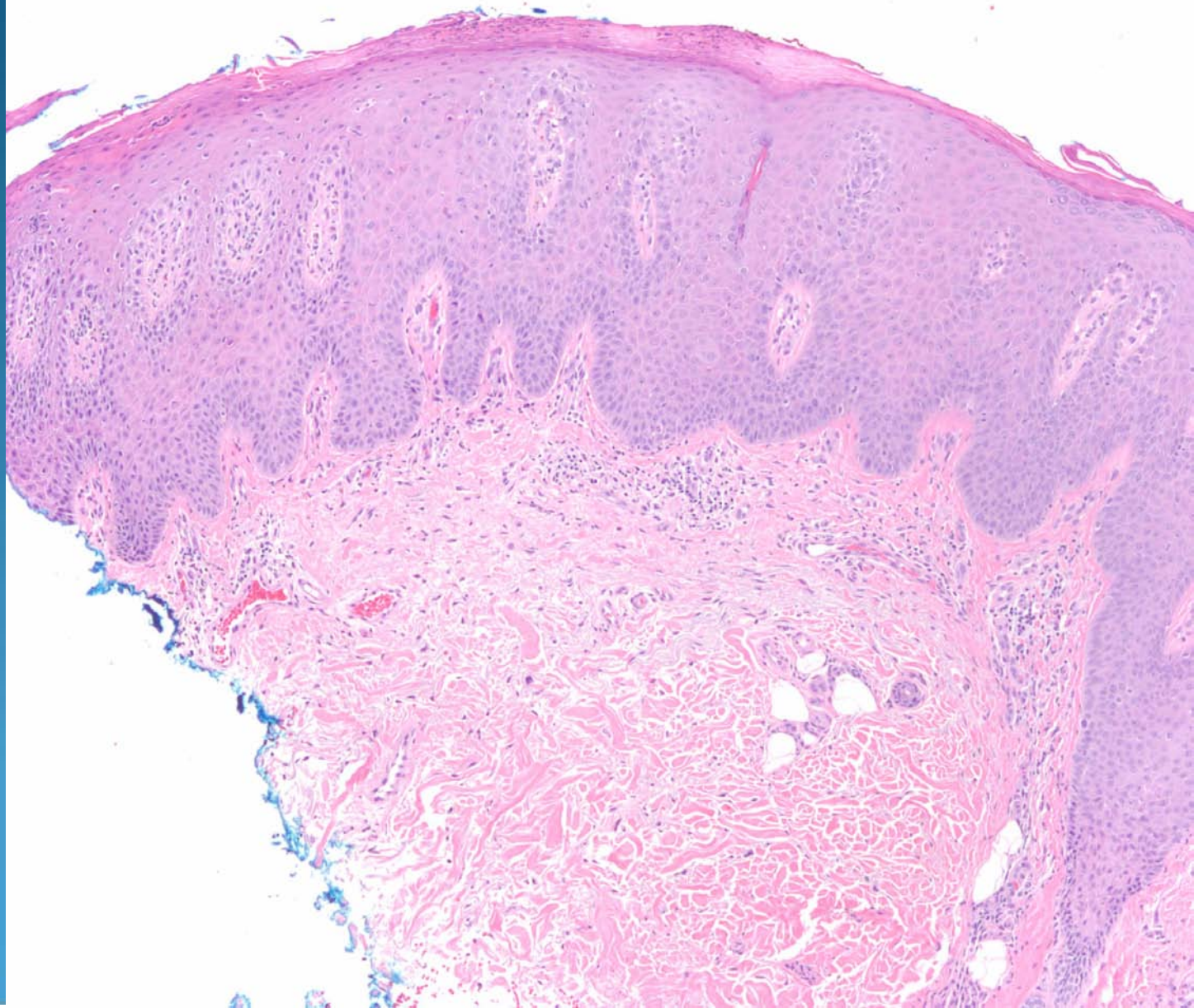
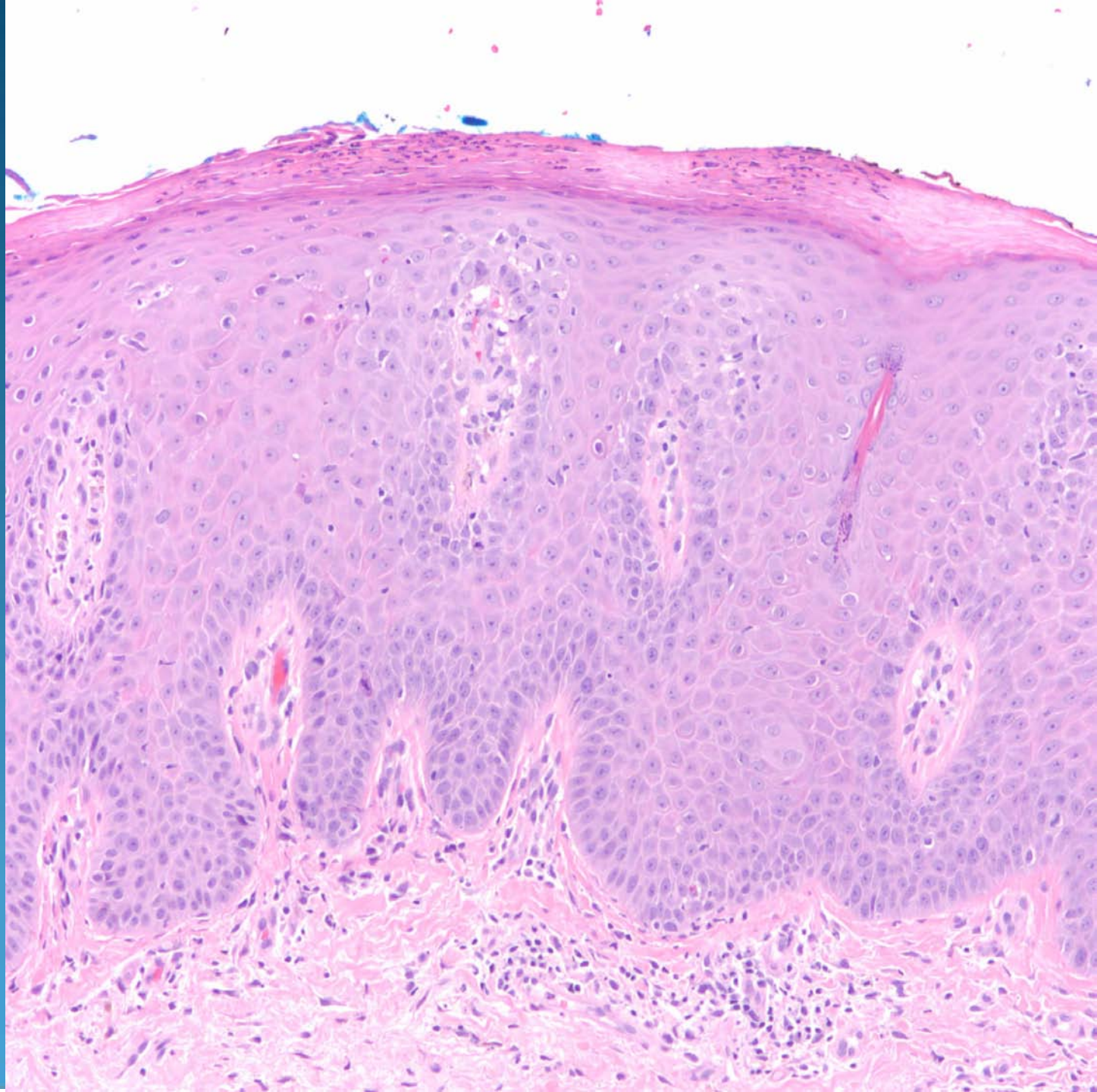


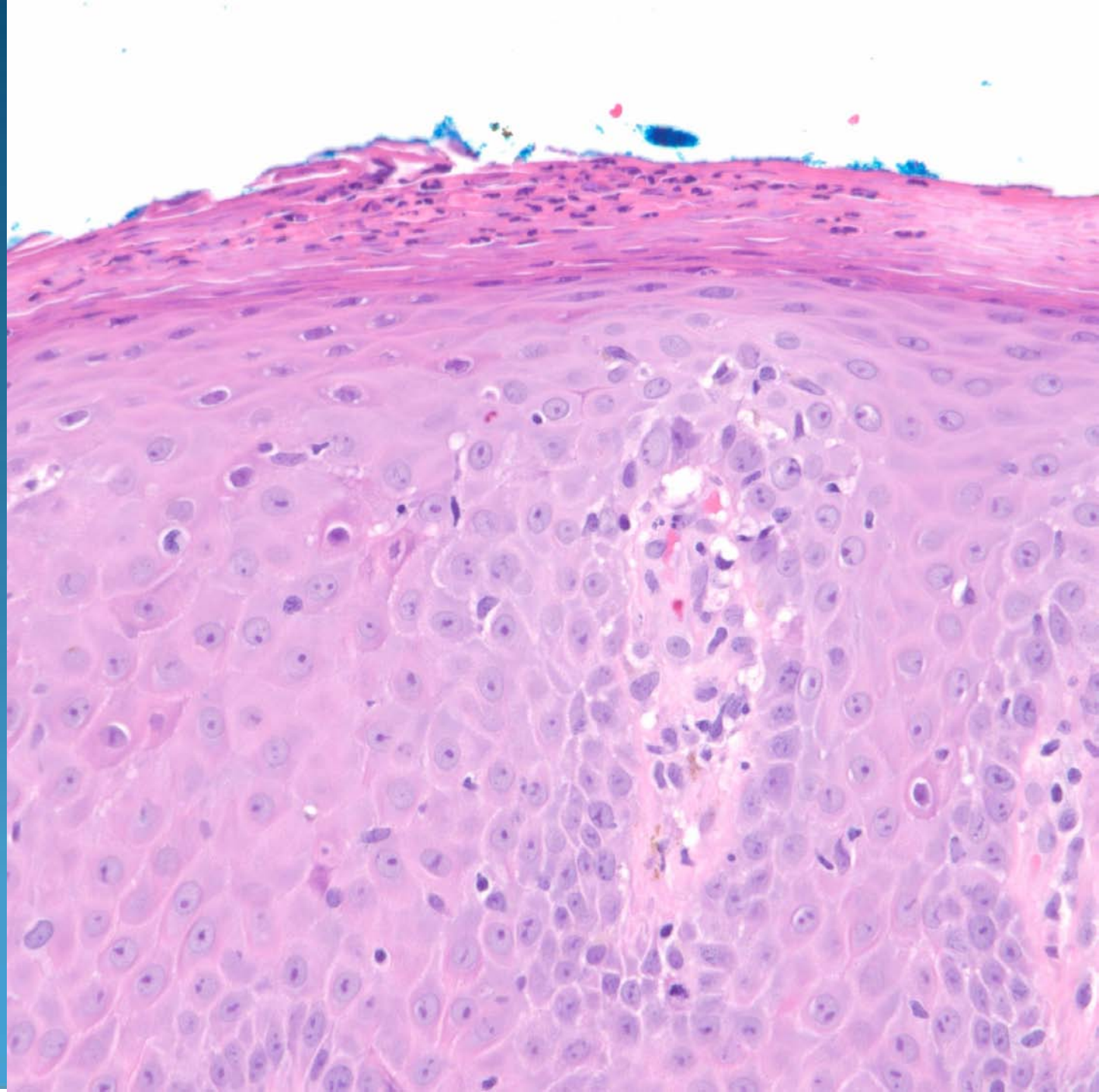
Dermatopathology Slide Review Part 70

Paul K. Shitabata, M.D.
Dermatopathology Institute



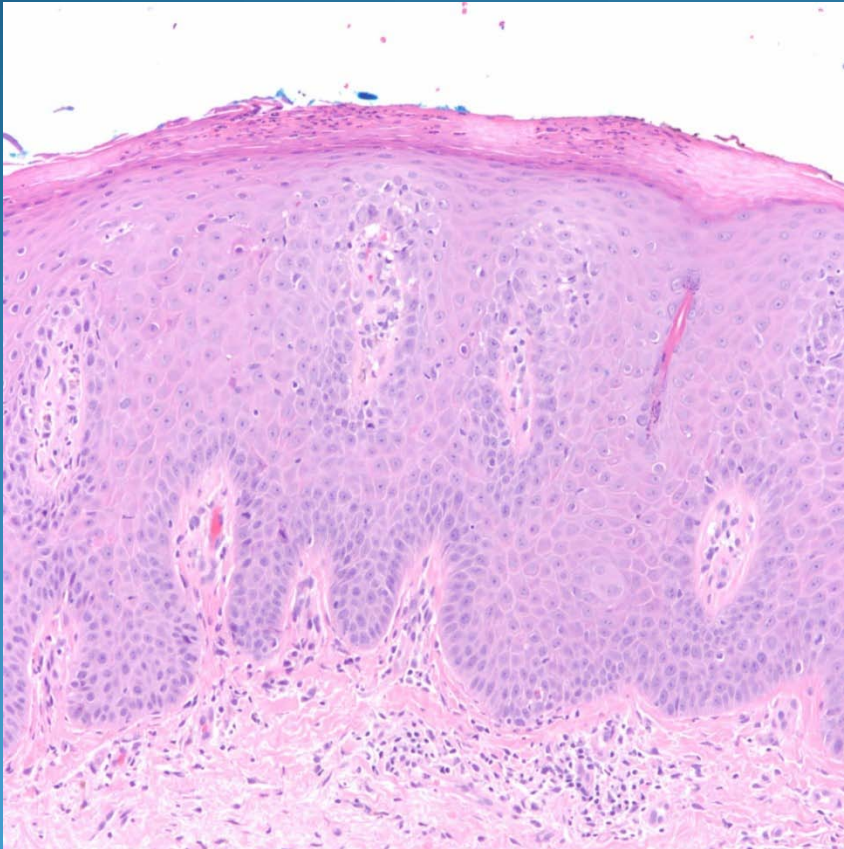




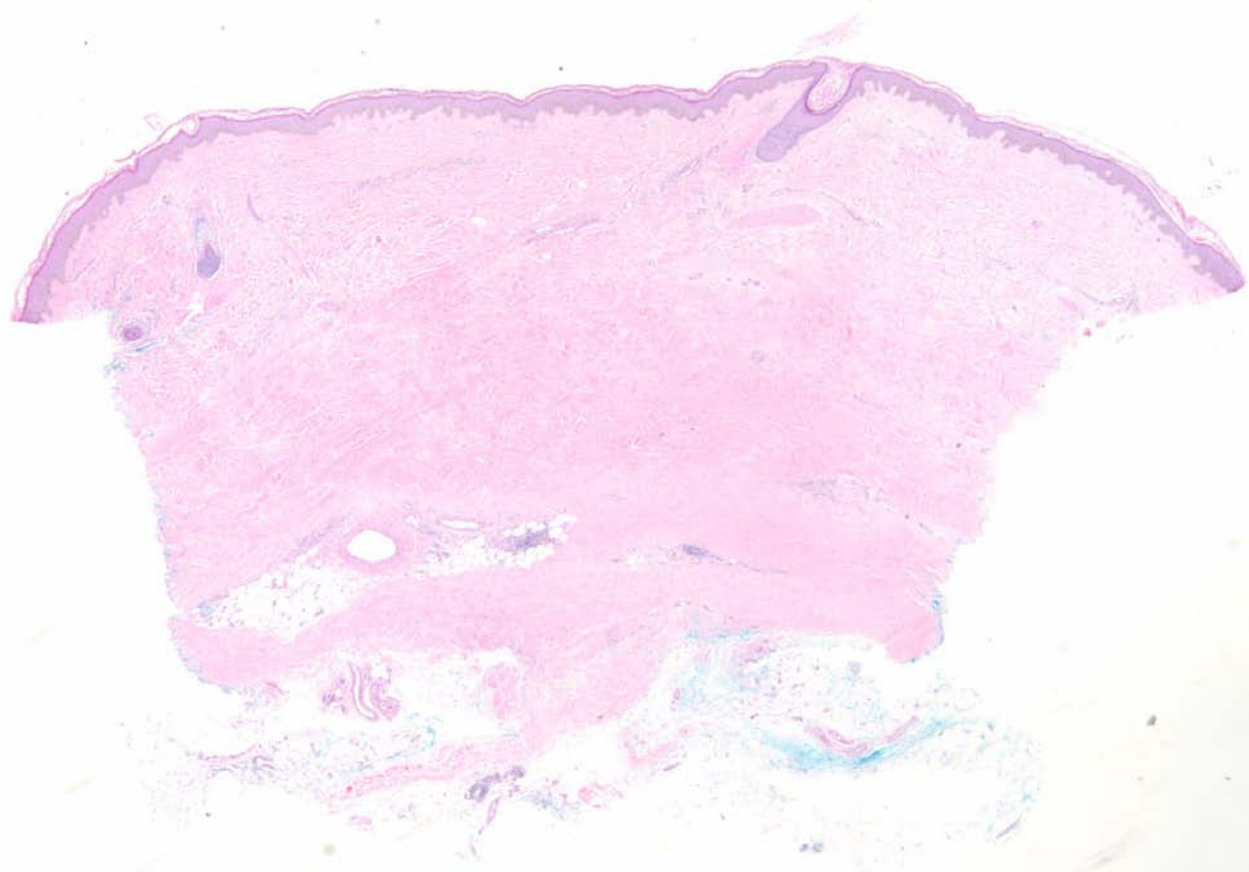


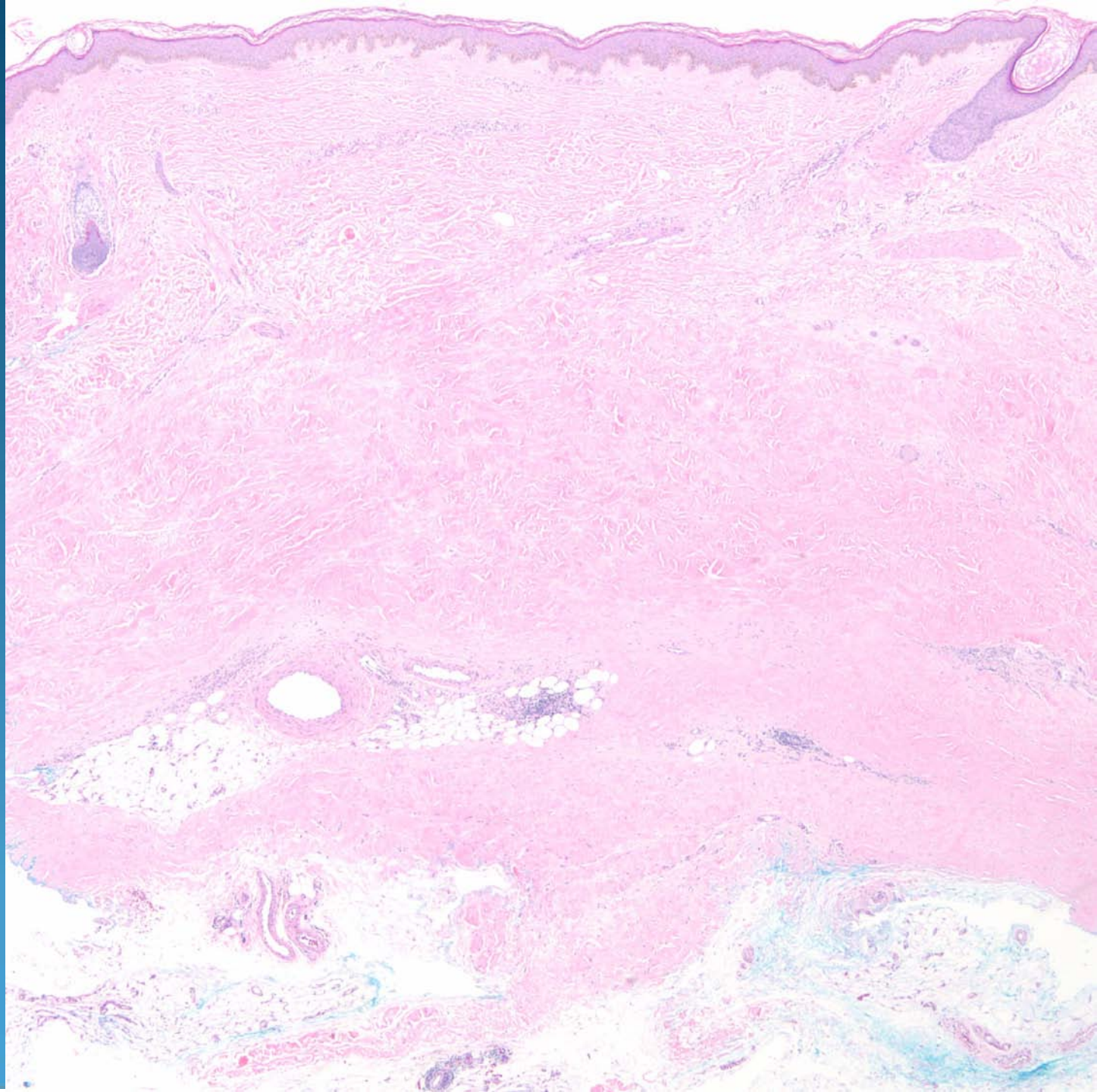
Psoriasis Vulgaris

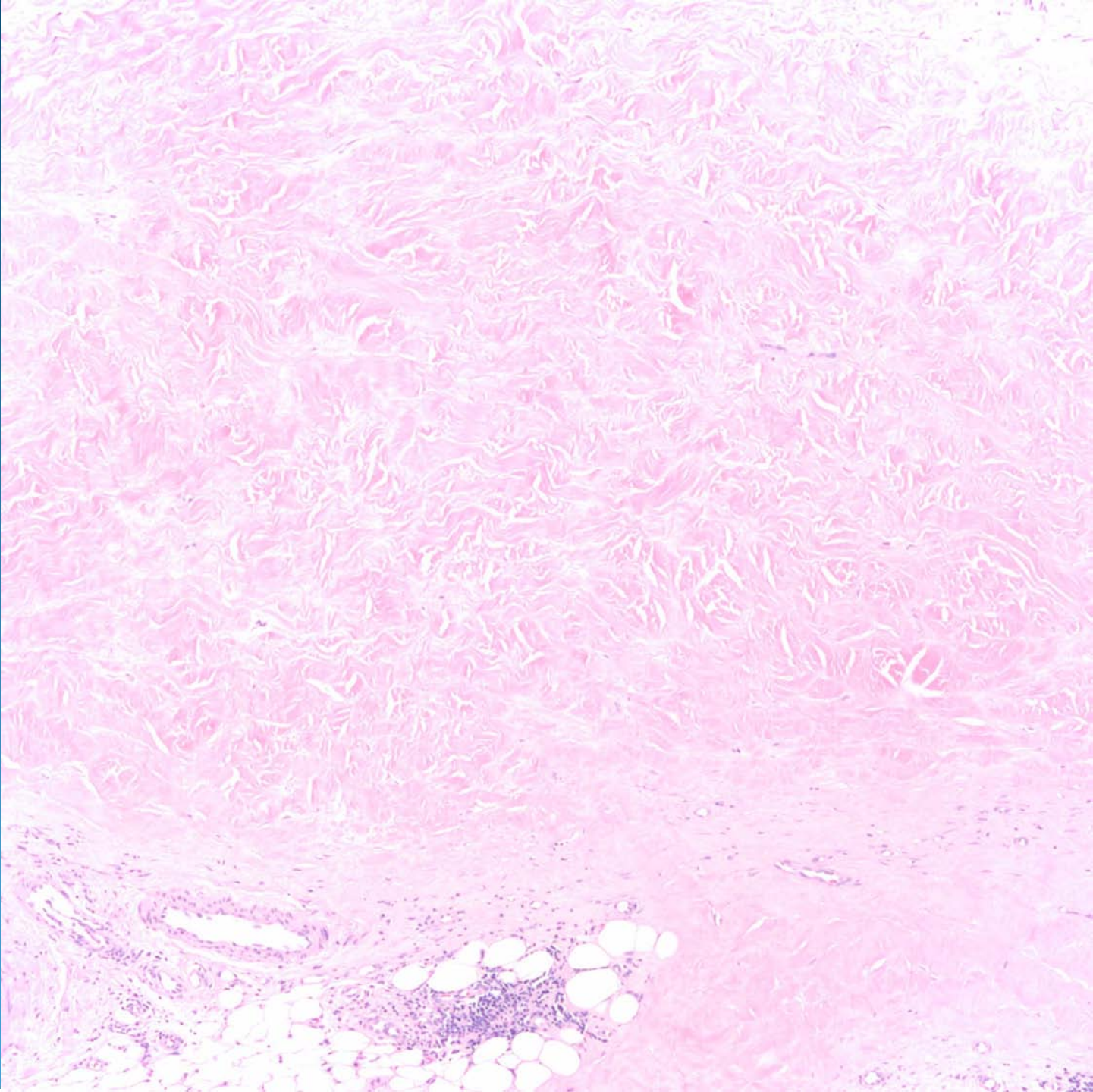
Pearls

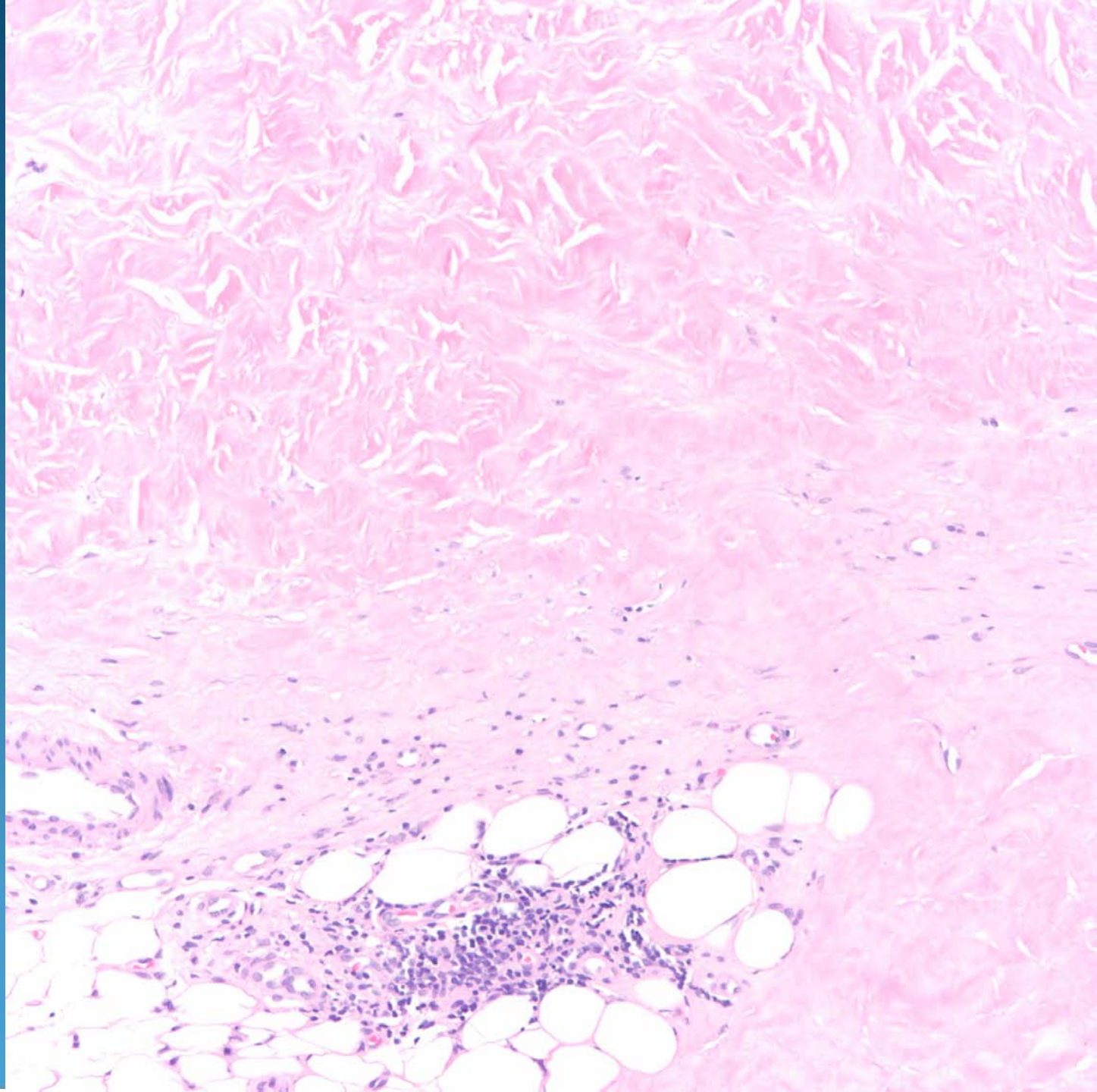


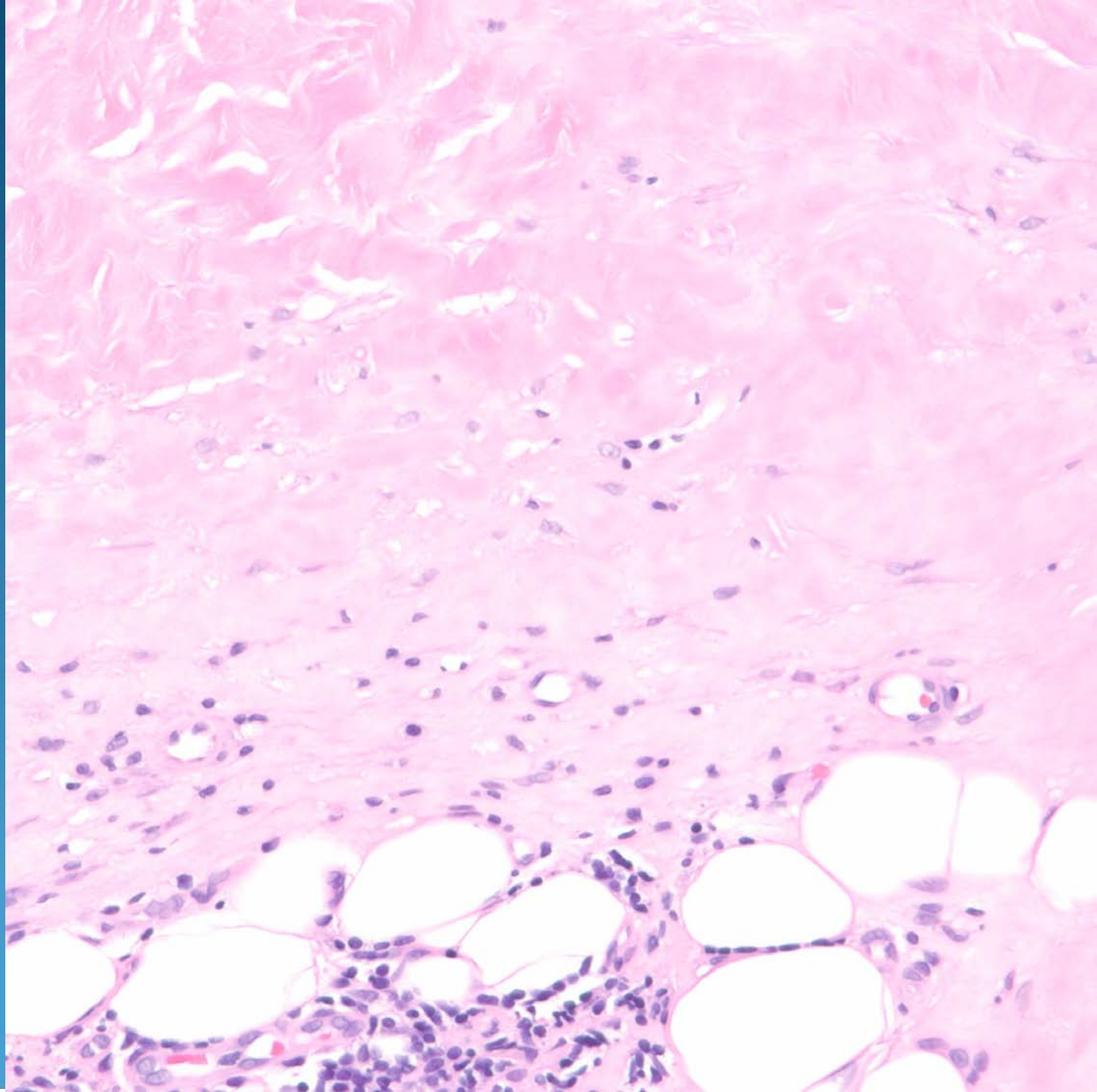
- Regular psoriasiform elongation of the rete ridges
- Hypogranulosis
- Intracorneal and intraepidermal collections of neutrophils
- Capillary tortuosity within papillary dermis
- Pallor of epidermal keratinocytes









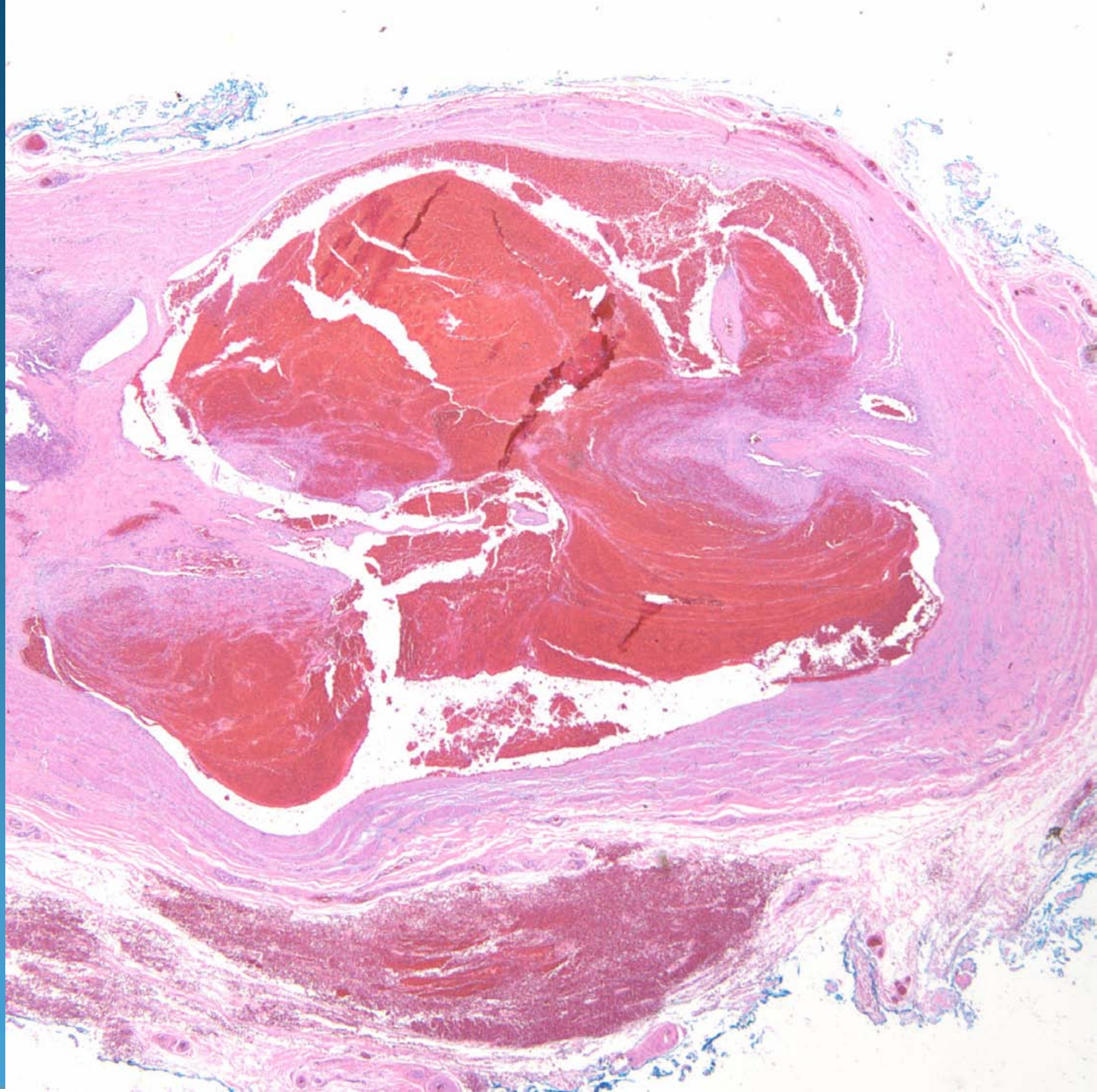


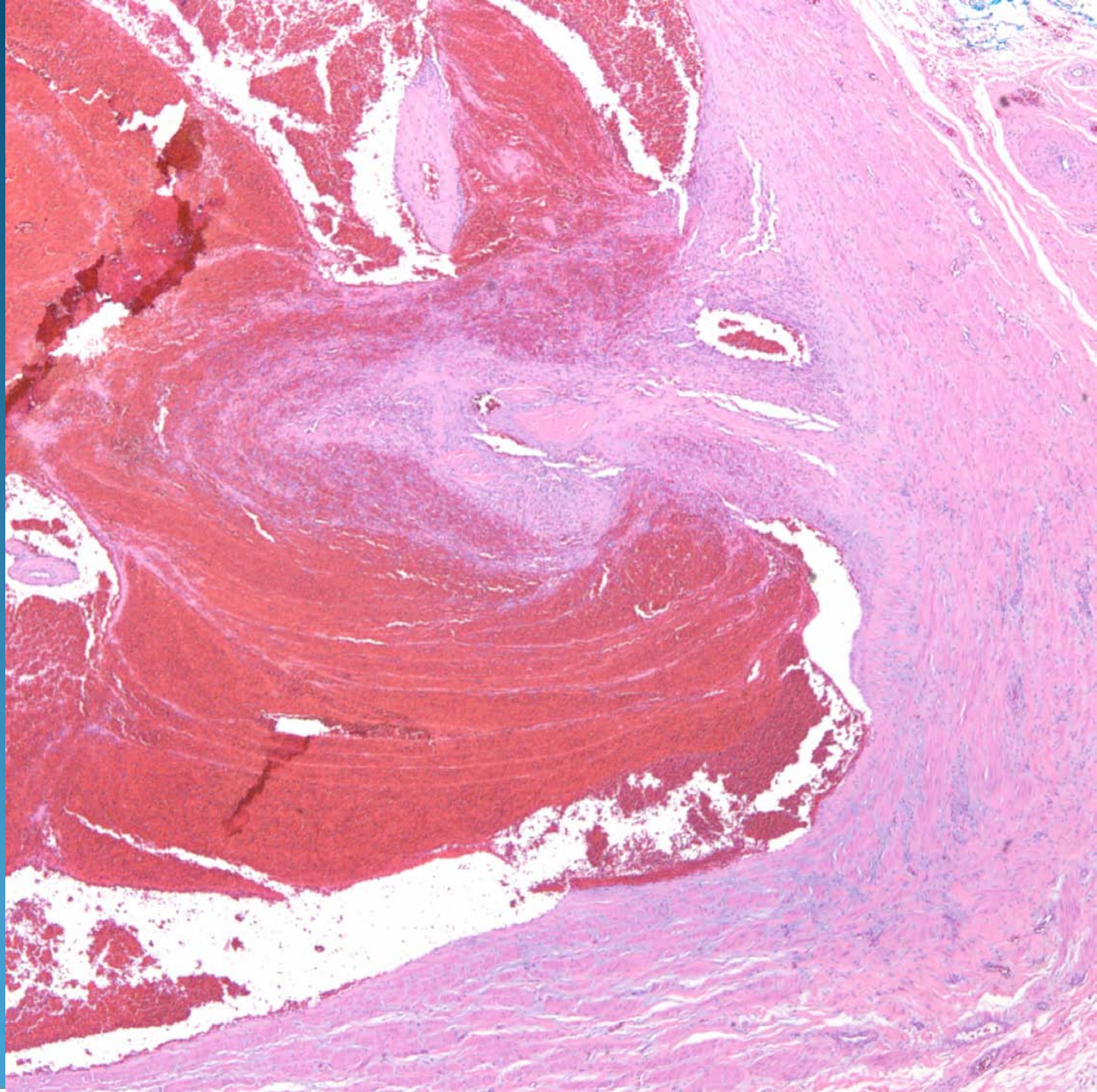
Morphea

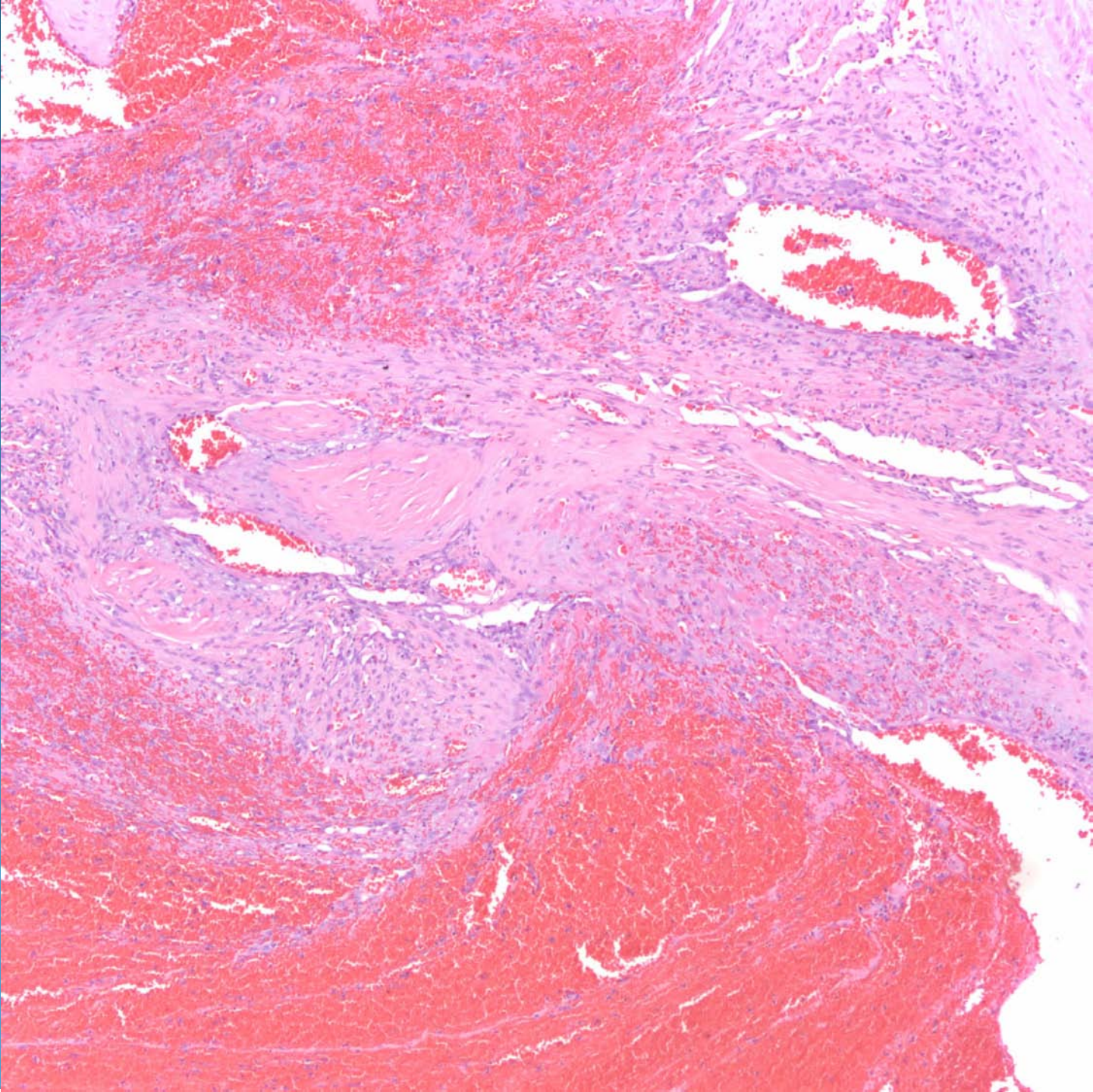
Pearls

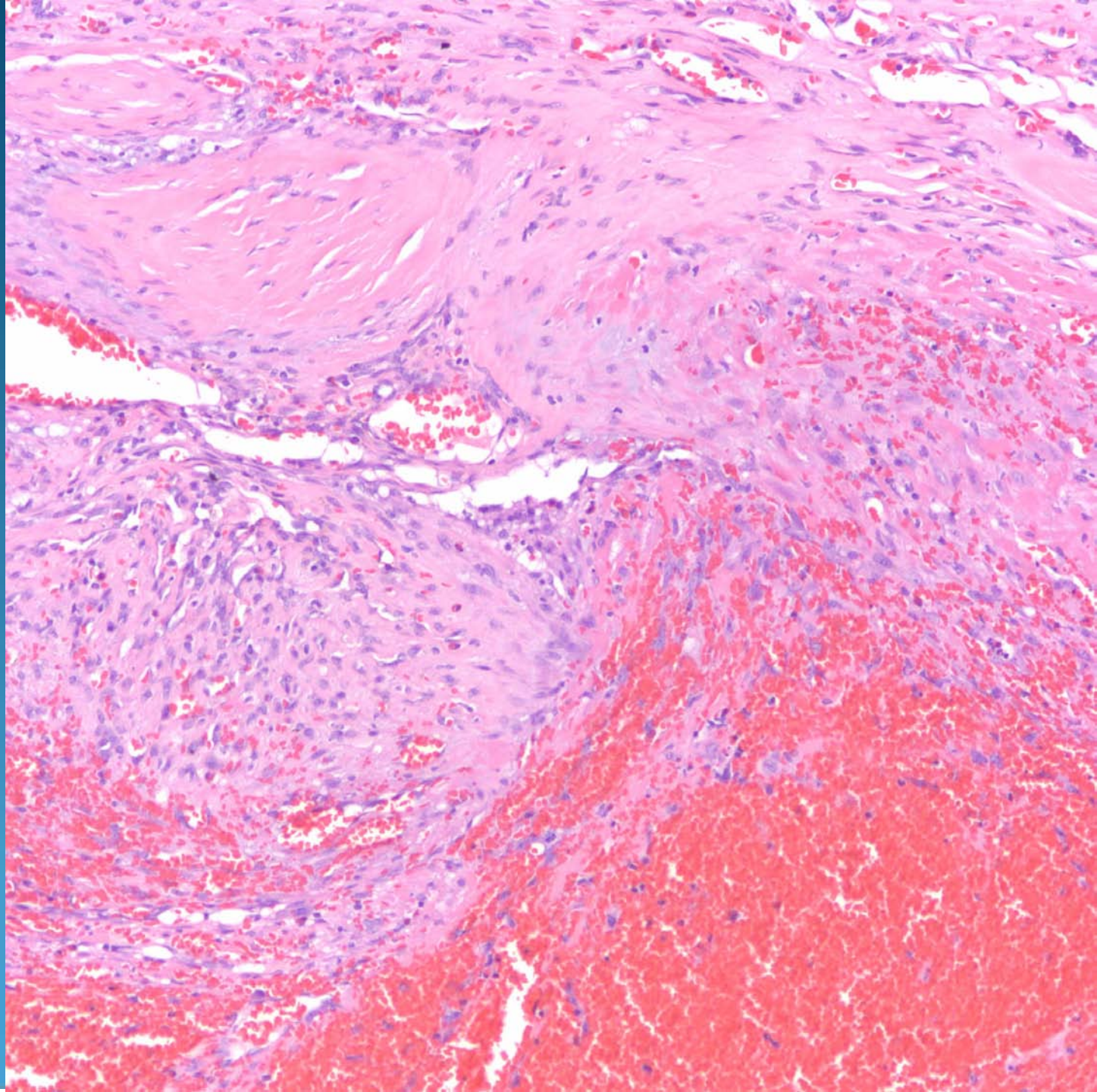


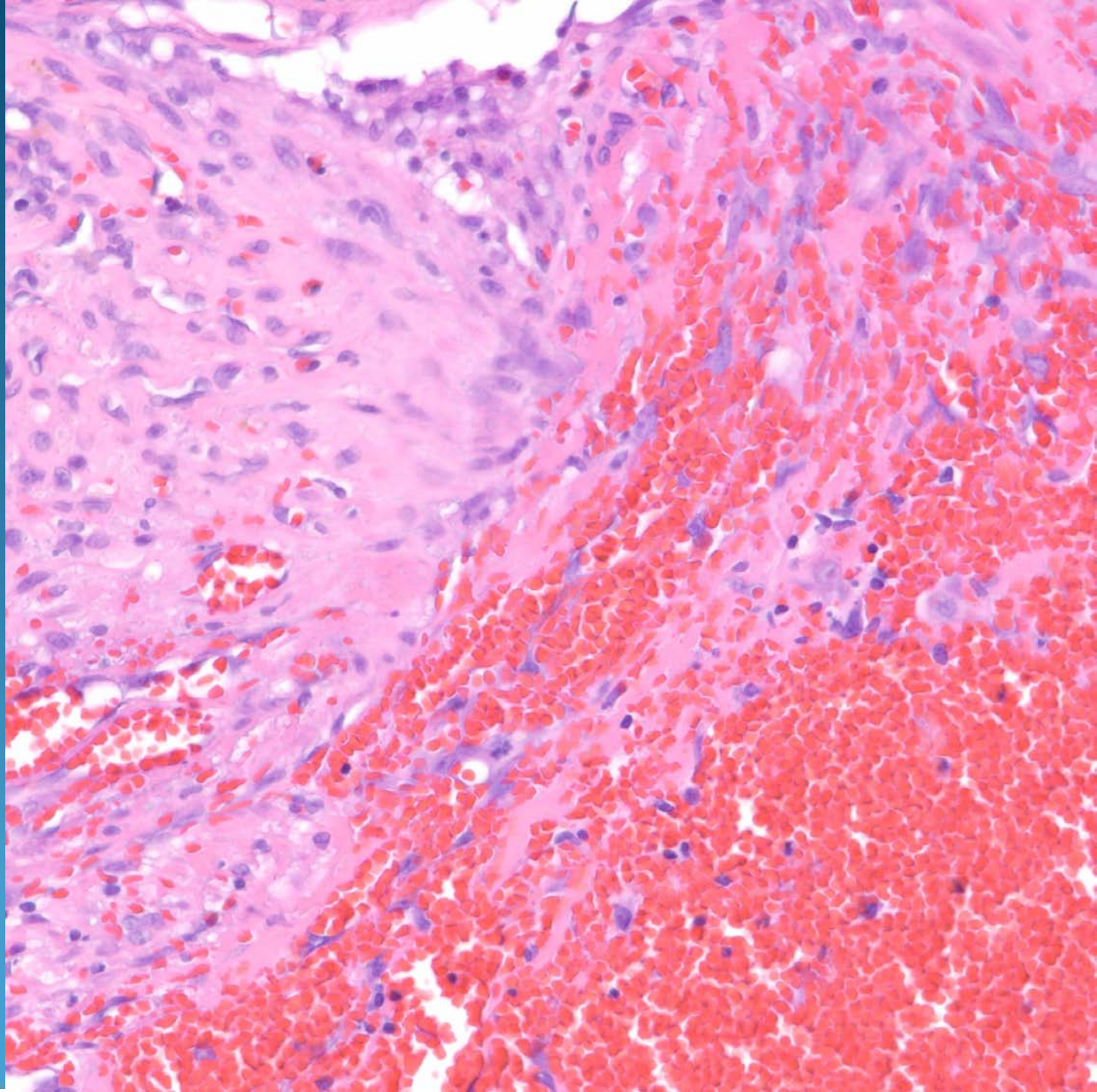
- Square biopsy sign with extensive dermal sclerosis
- May have superficial and deep perivascular dermatitis with plasma cells
- May extend into subcutaneous adipose tissue (morphea profunda)





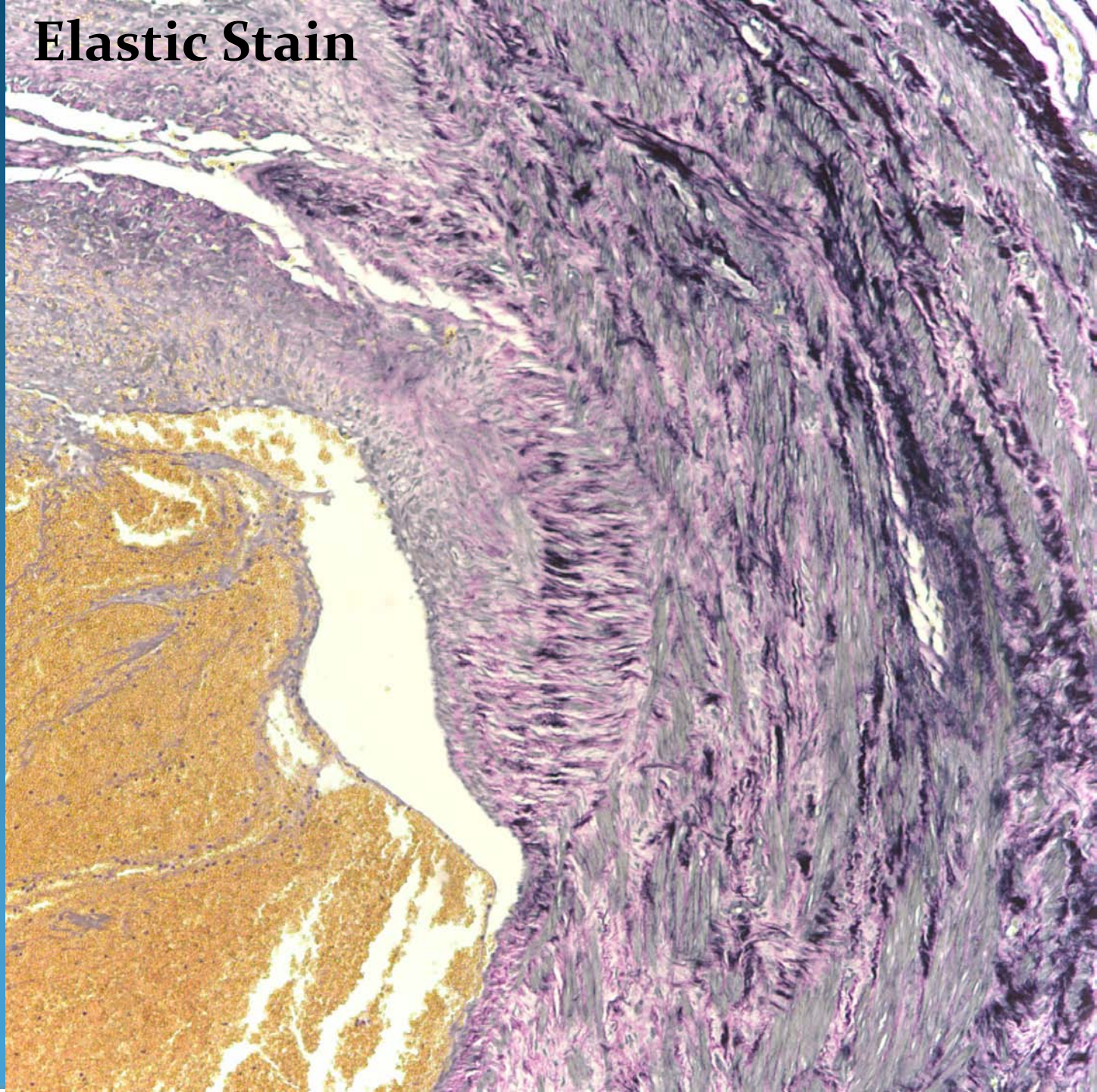




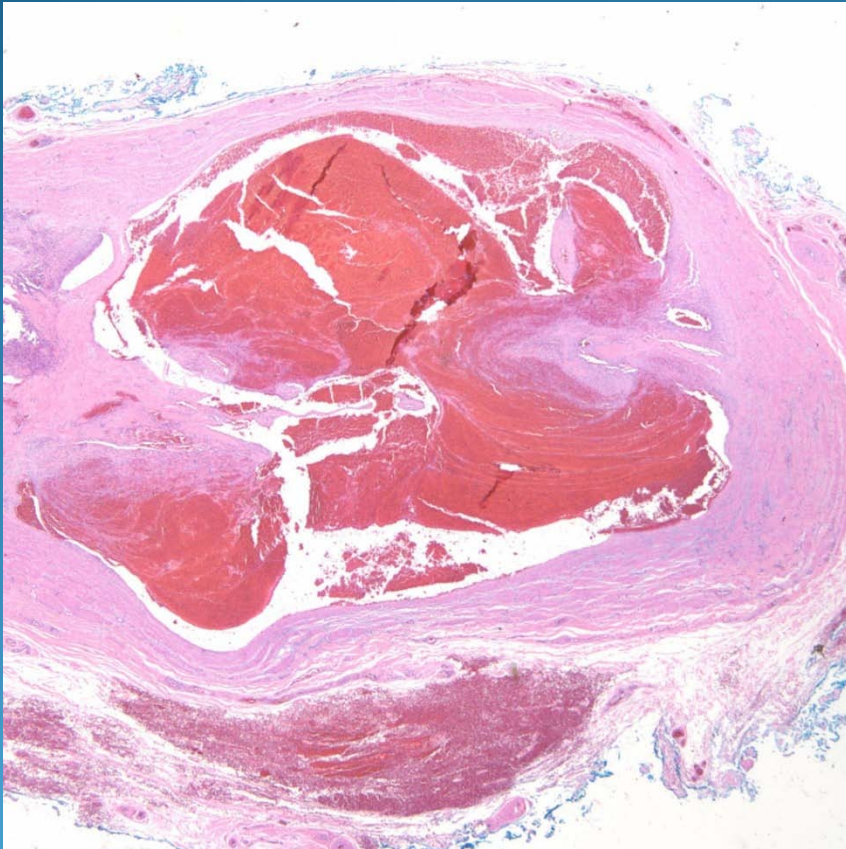


Organizing Thrombus

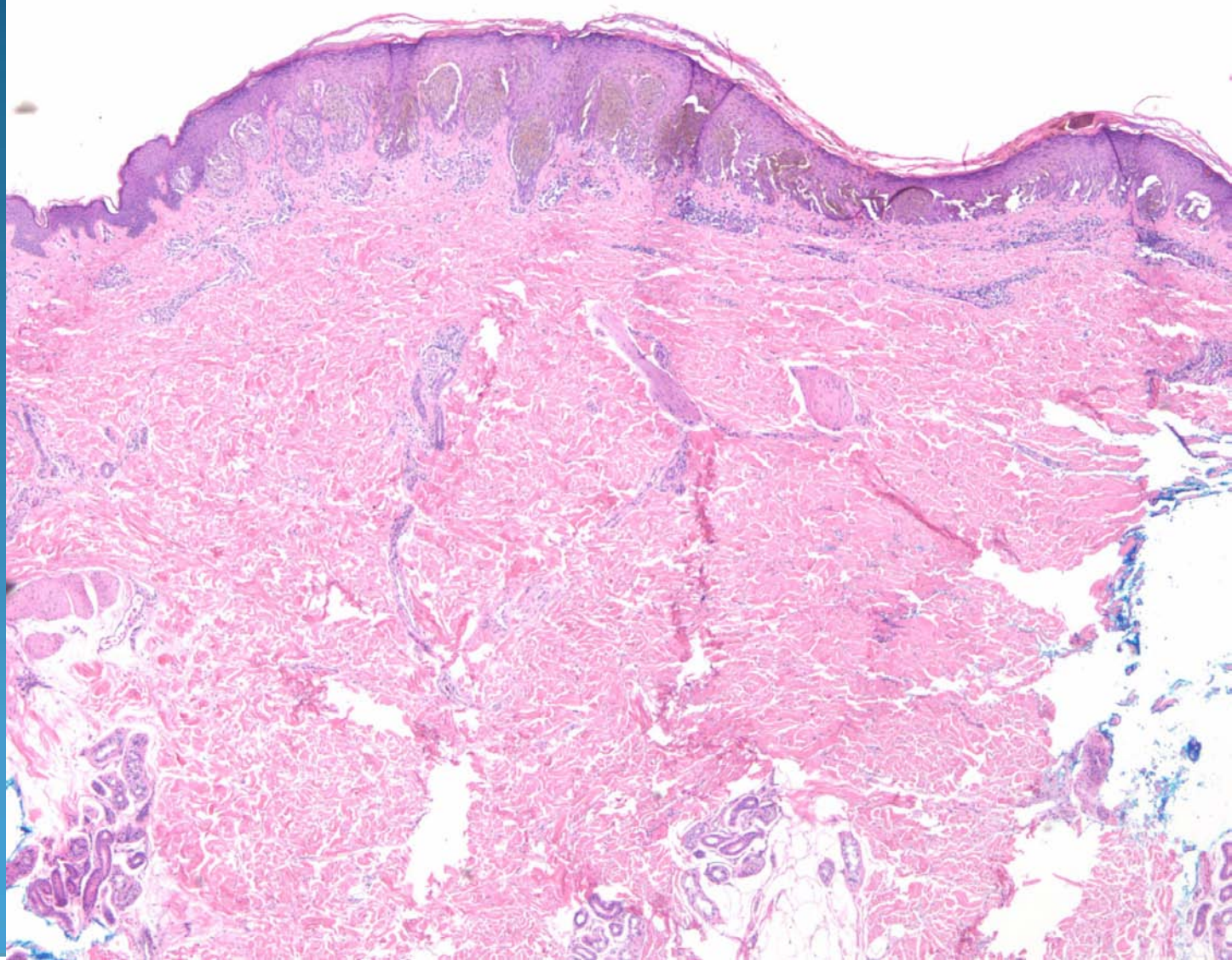
Elastic Stain

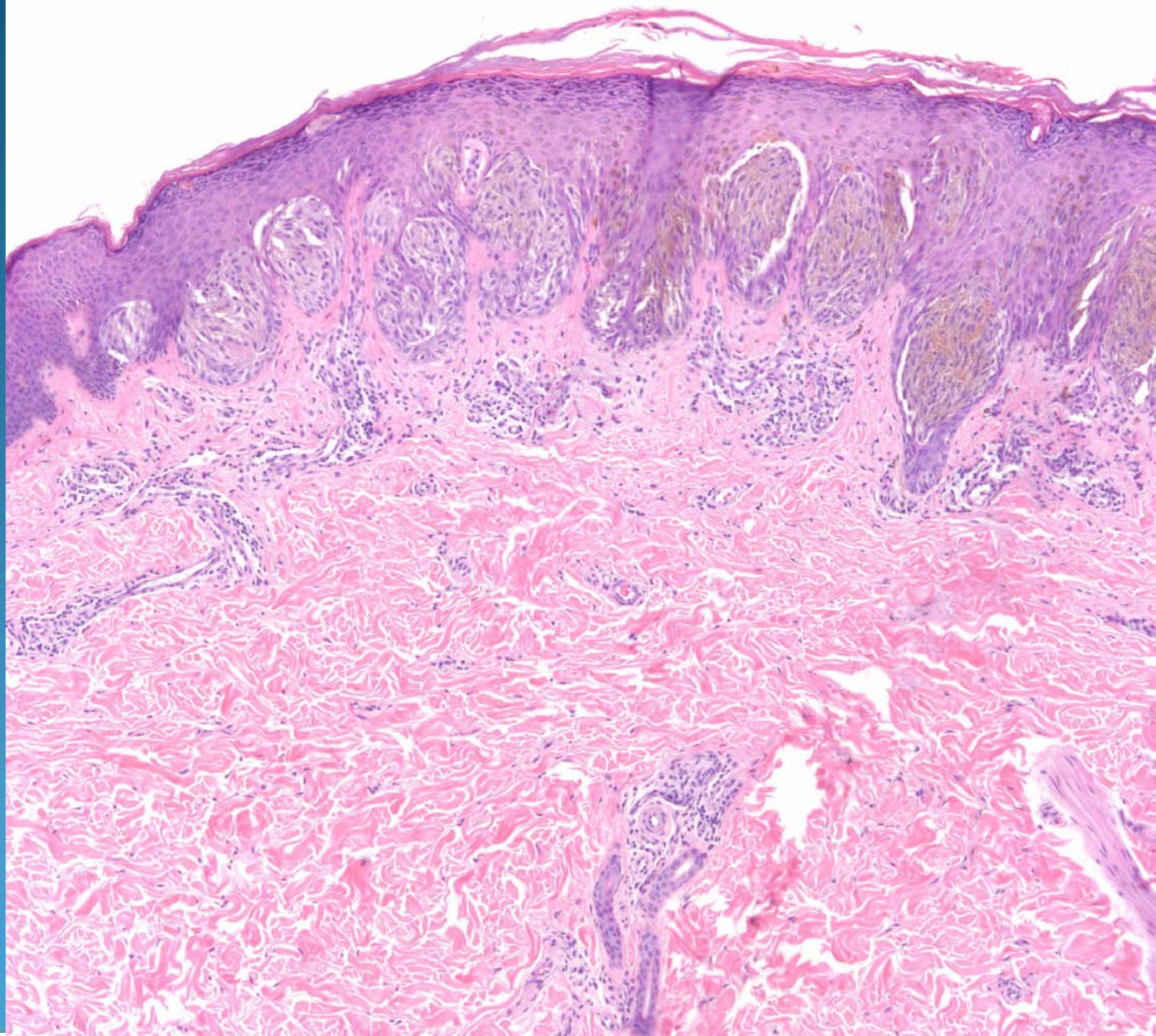


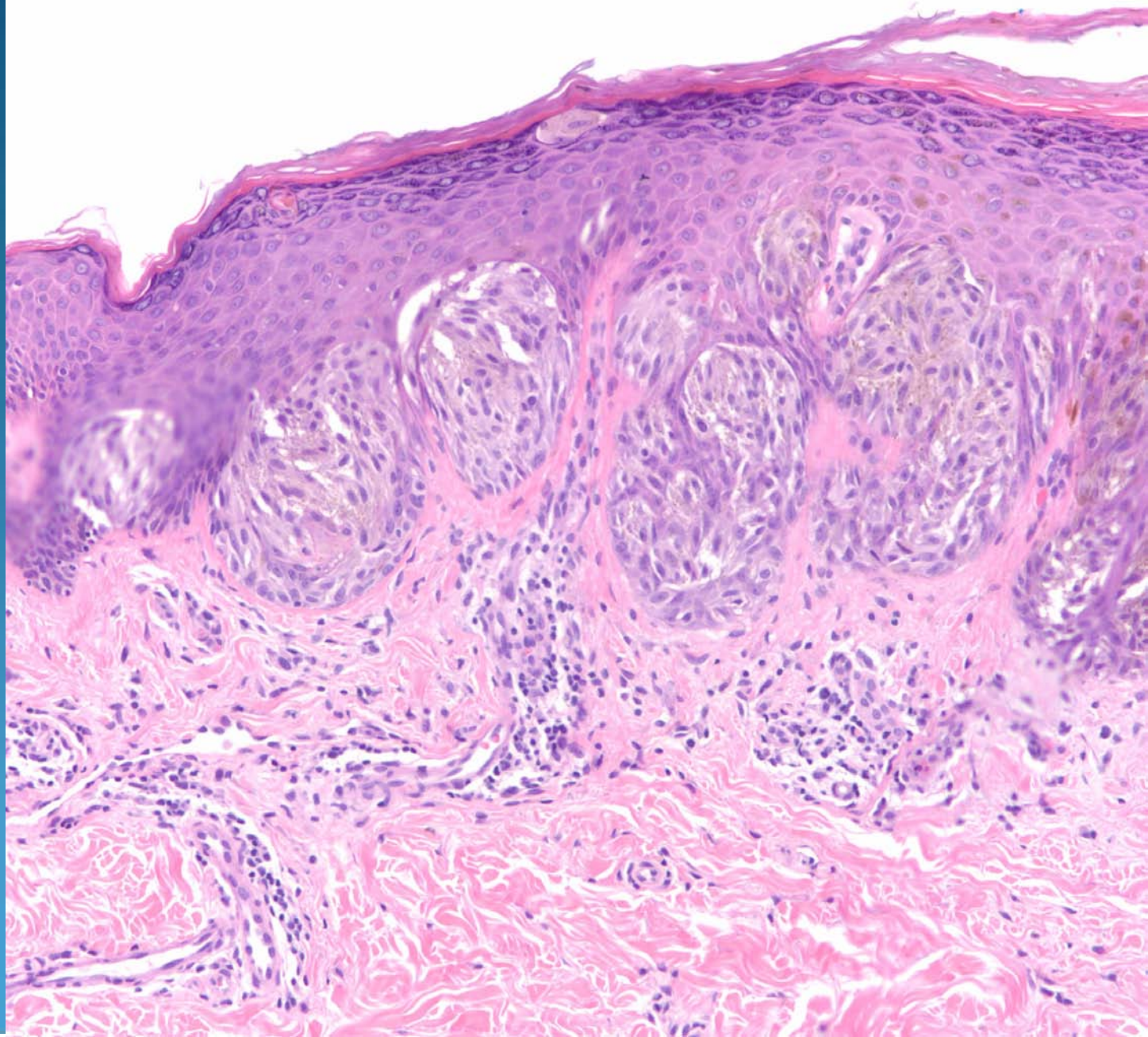
Pearls

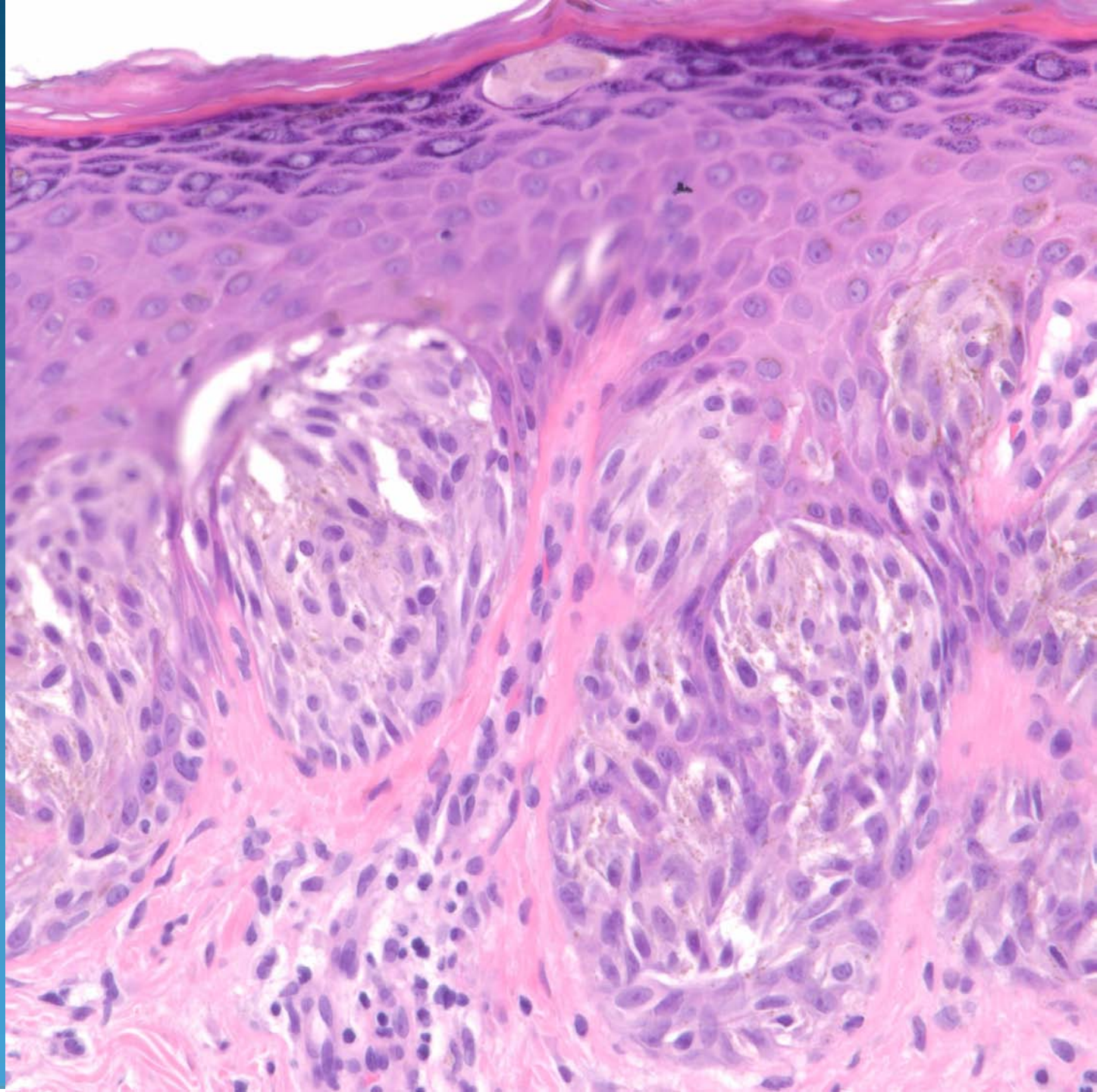


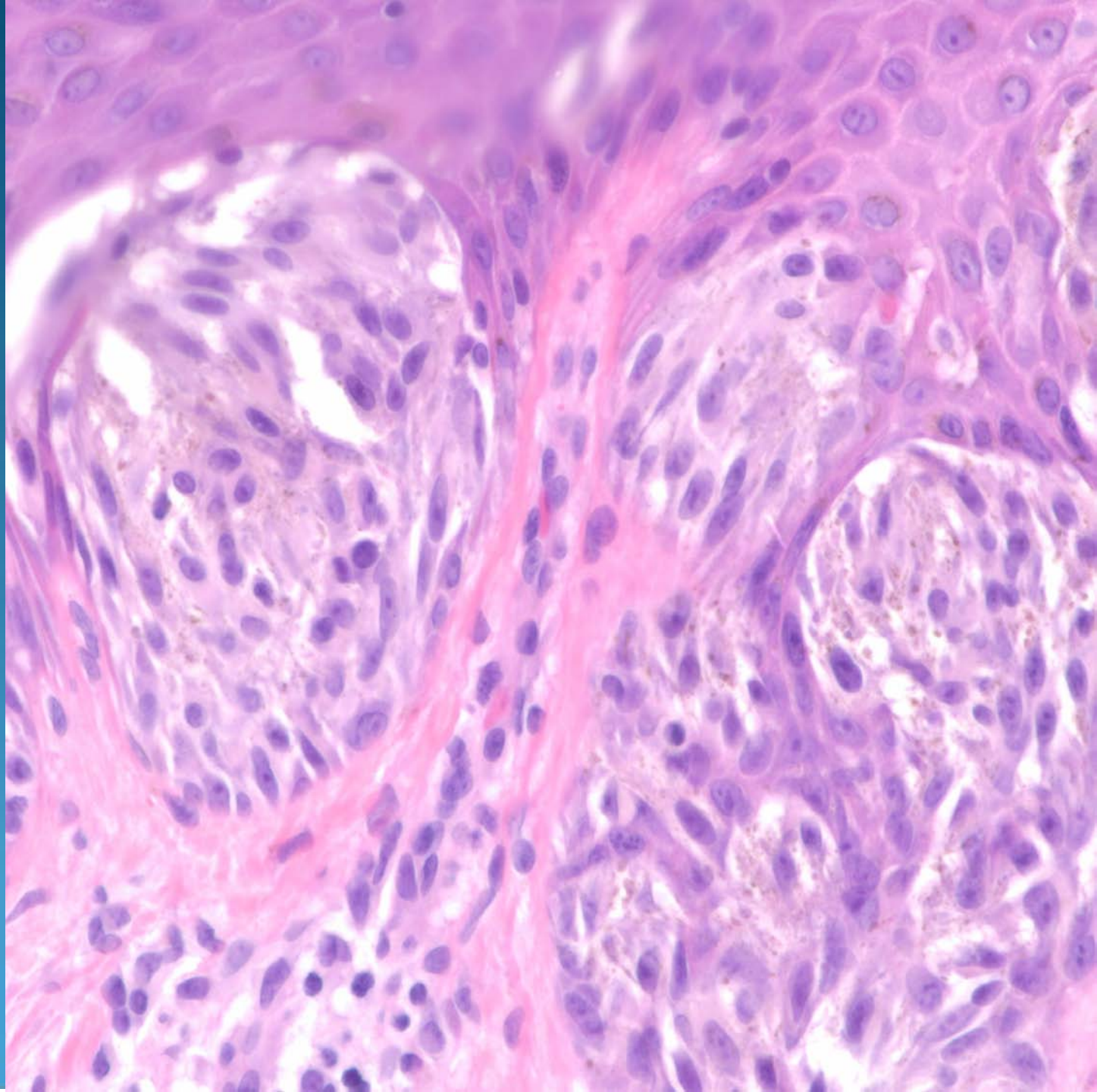
- Look for ectatic vascular space-may confirm vascular wall with elastic stain
- Thrombus will be attached to intimal lining
- Degree of organization dependent upon age of thrombus





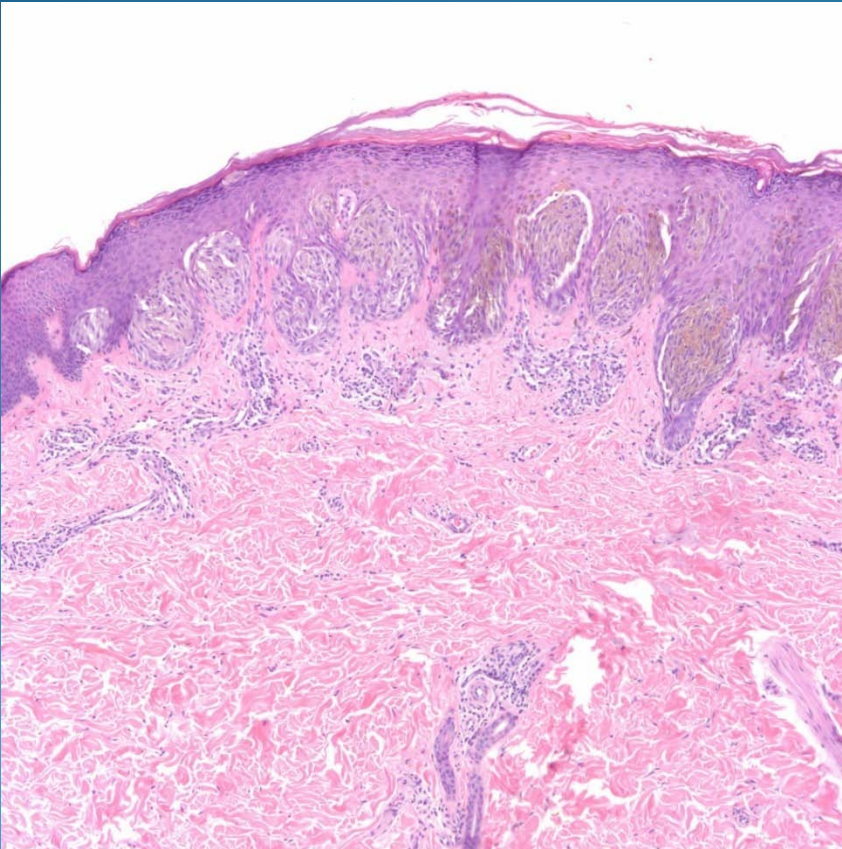




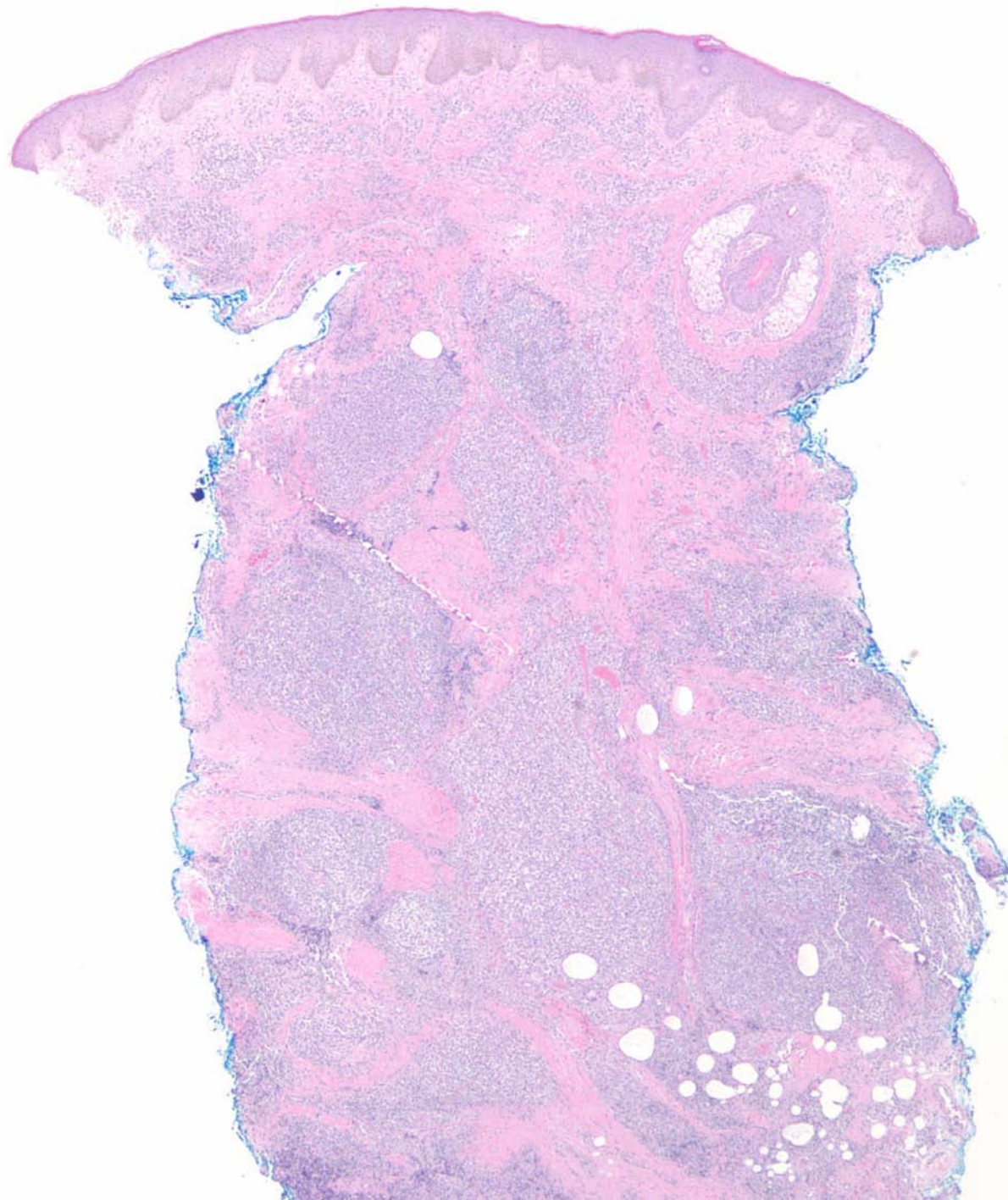


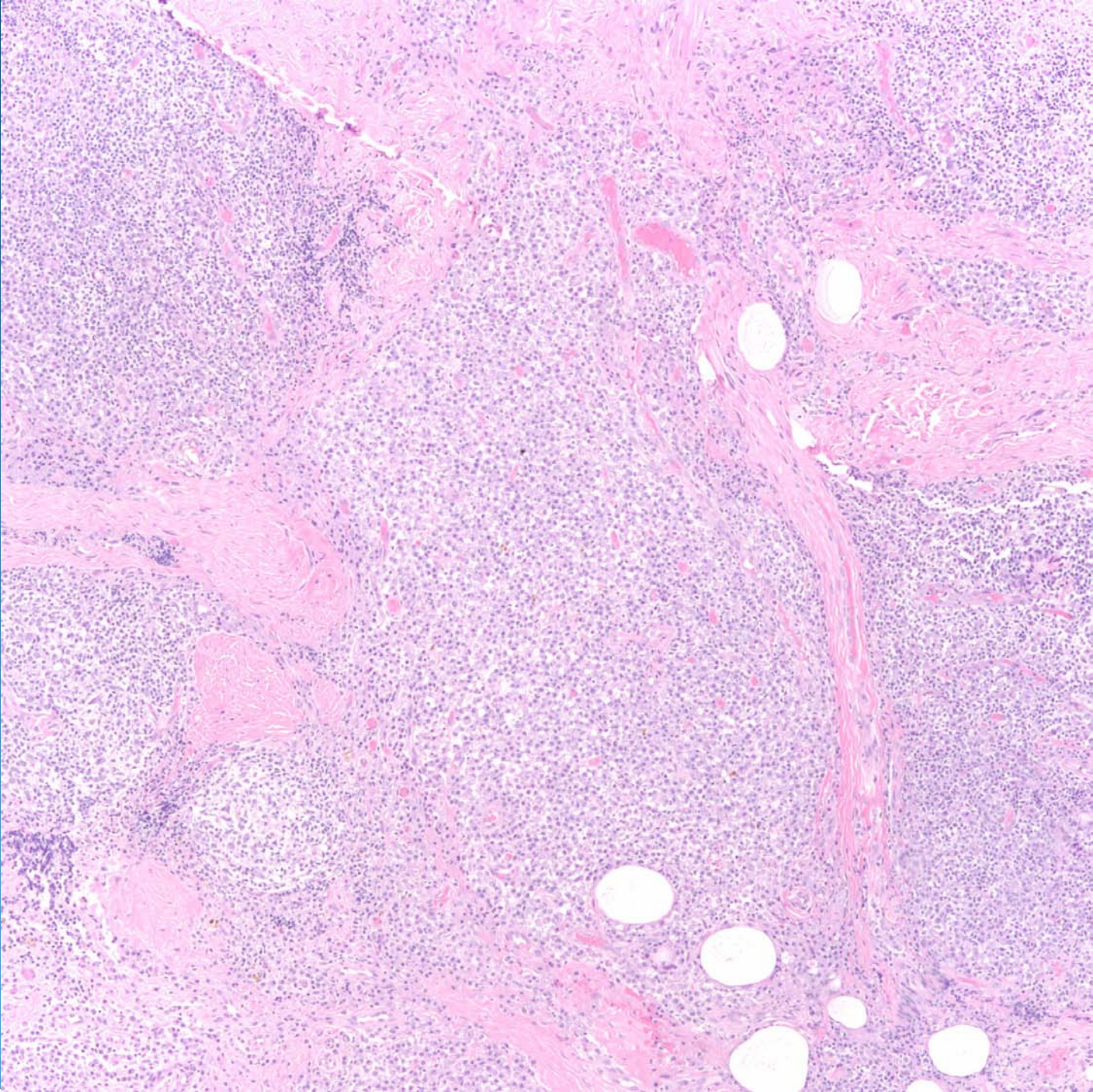
Pigmented Spindle Cell Nevus

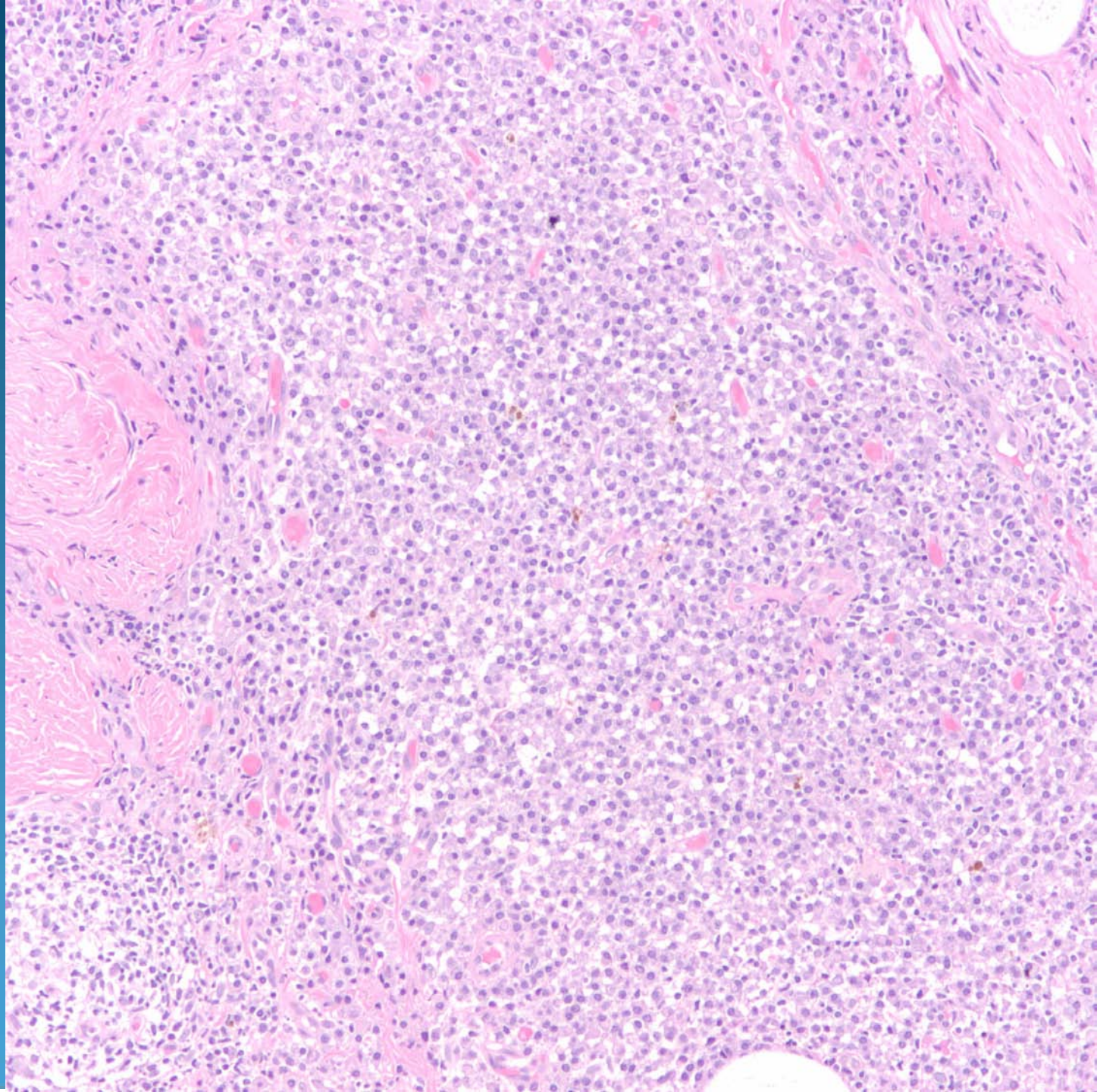
Pearls

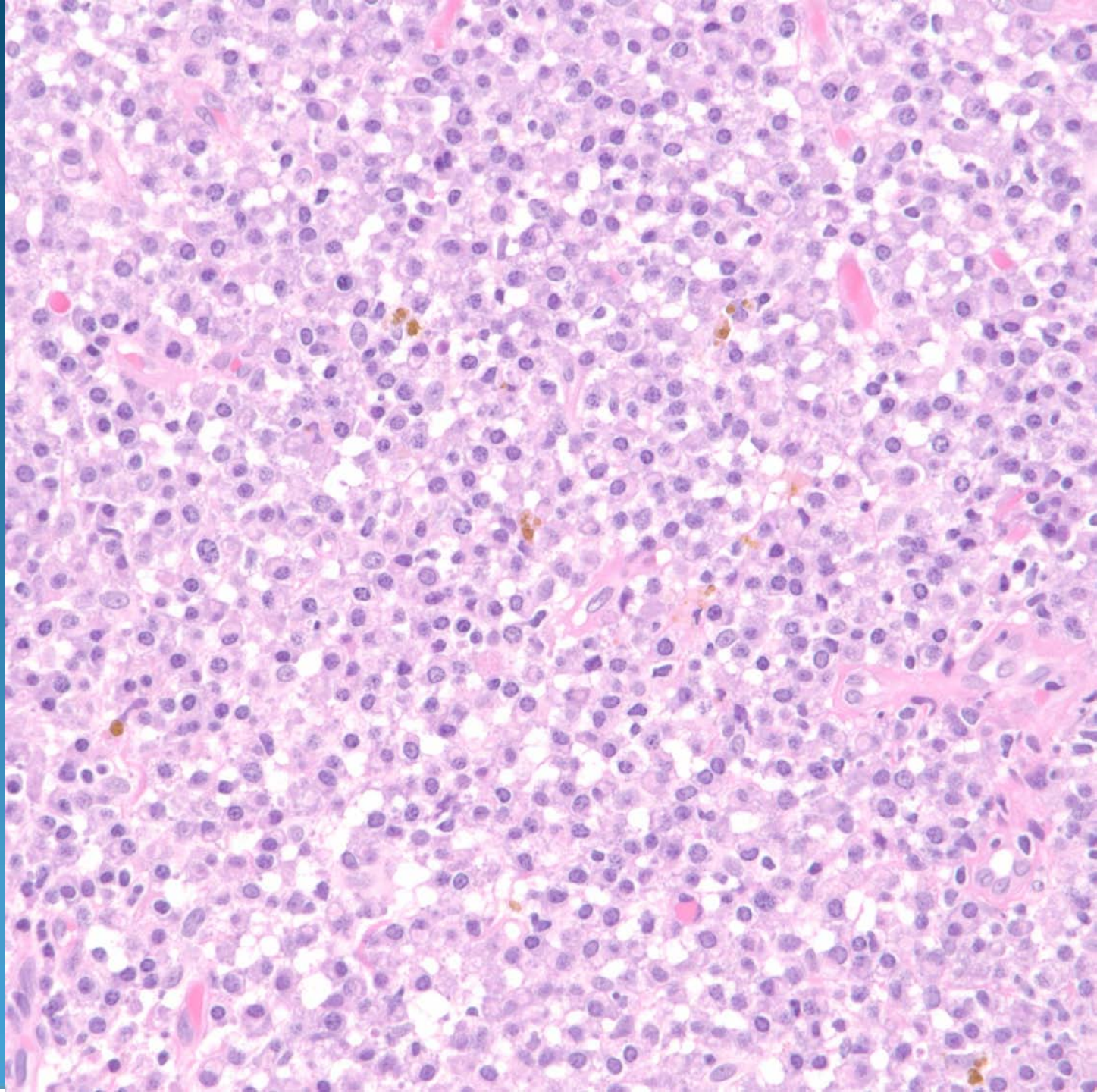


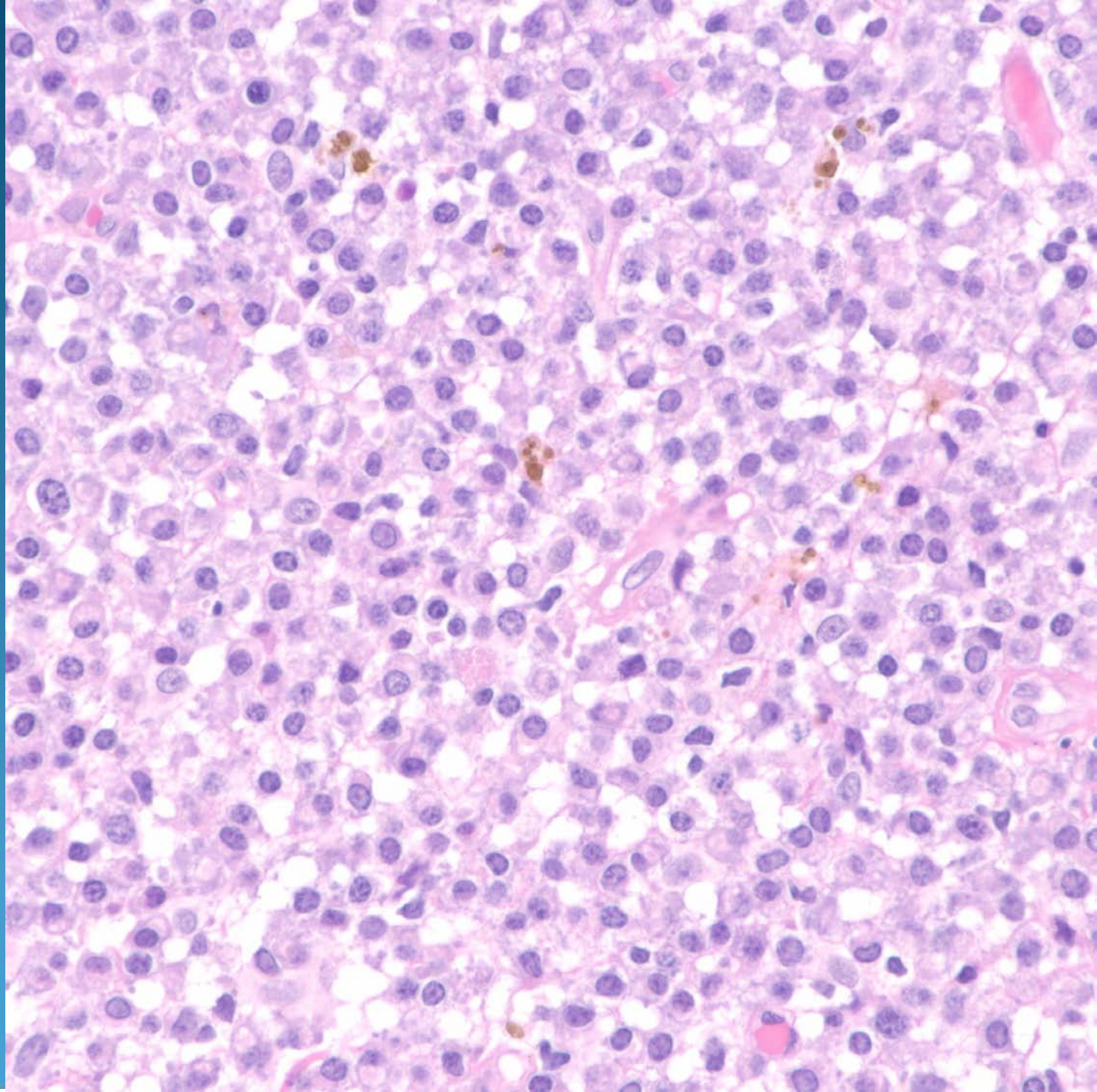
- Melanocytic nevus with spindled melanocytes and heavy but even melanin pigmentation
- Sharp peripheral circumscription
- Kamino bodies uncommon
- Minimal cytologic atypia



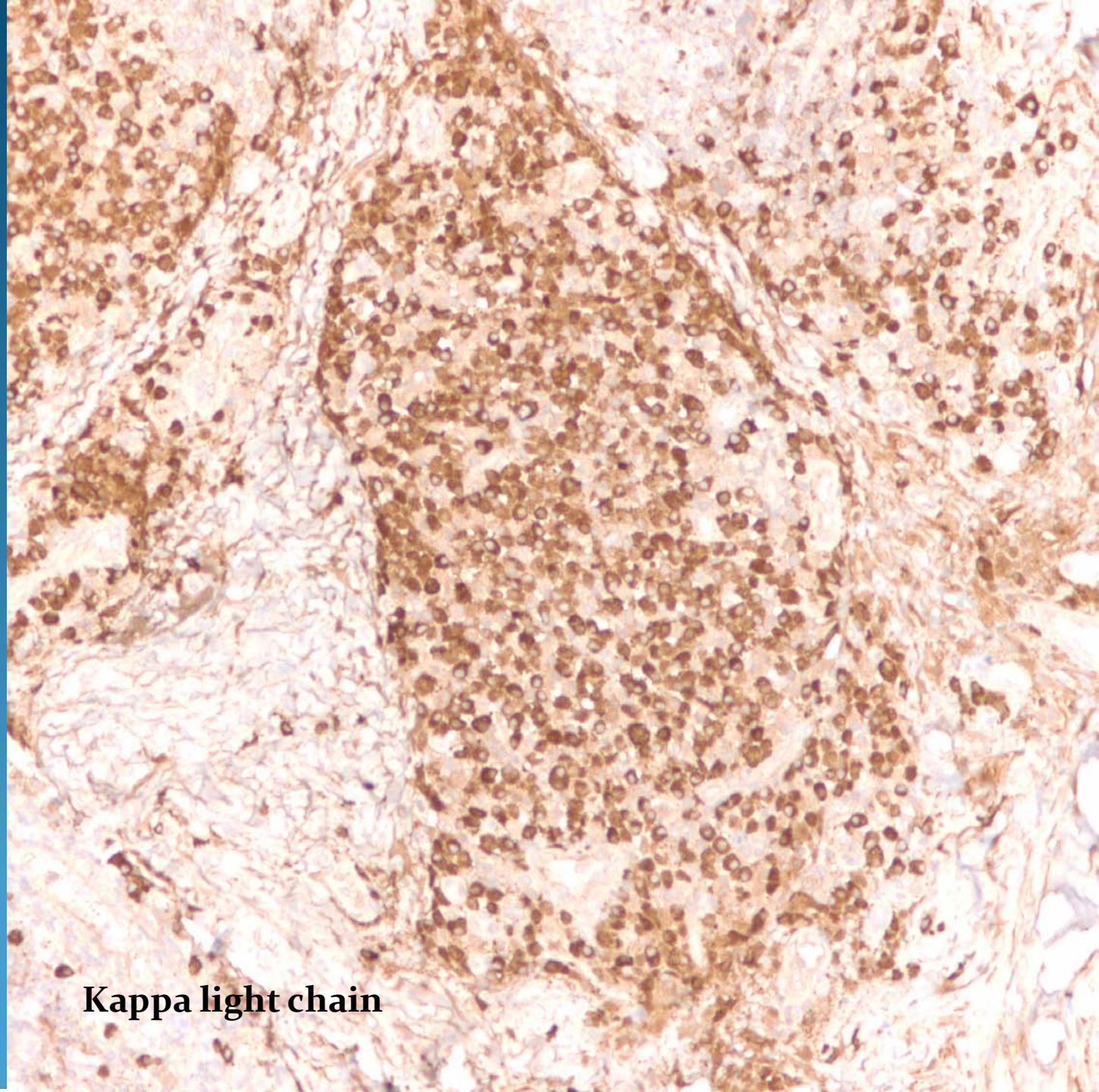




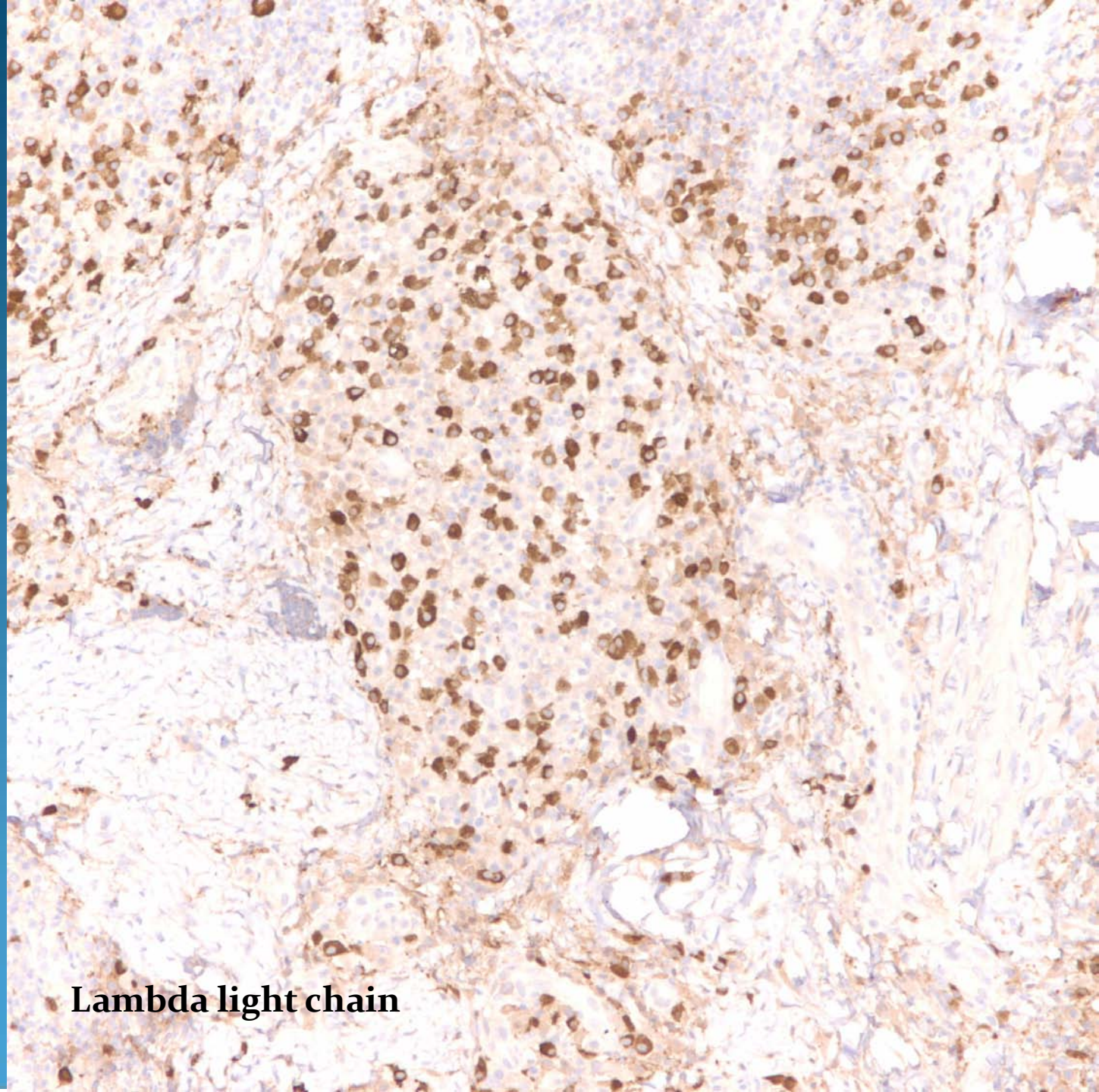




Cutaneous Plasmacytoma

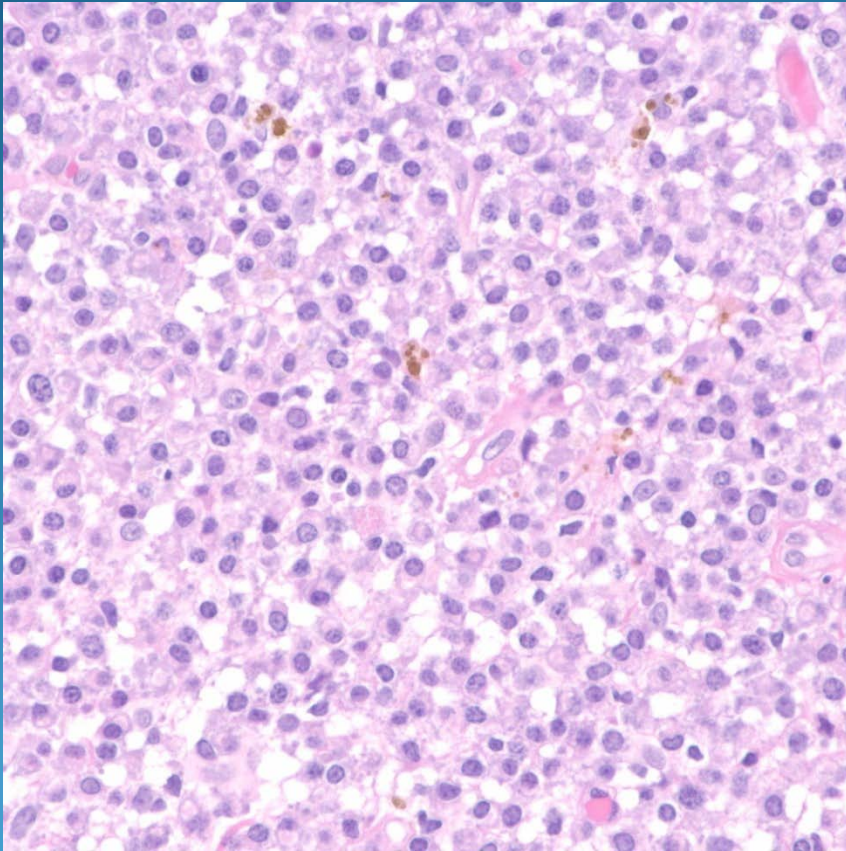


Kappa light chain



Lambda light chain

Pearls



- Diffuse plasma cell infiltrate
- May show varying stages of immaturity including plasmablasts
- Rule out infection and chronic inflammatory dermatoses
- Confirm with lambda/kappa light chain staining
- Rule out systemic plasma cell myeloma